

ST6GAL1 Monoclonal Antibody (LN1)

Catalog NumberMA5-11900

Product data sheet

Details		Species Reactivity	
Size	500 µL	Species reactivity	Human, Mouse
Host/Isotope	Mouse / IgM, kappa	Published species	Human, Not Applicable
Class	Monoclonal	Tested Applications	
Type	Antibody	Flow Cytometry (Flow)	Dilution * Assay-dependent
Clone	LN1	Immunohistochemistry (Paraffin) (IHC (P))	1:25-1:50
Immunogen	Nuclei from pokeweed mitogen-stimulated peripheral blood lymphocytes	Western Blot (WB)	1:100-1:2,000
Conjugate	Unconjugated	Immunocytochemistry (ICC/IF)	1:10-1:100
Form	Liquid	Published Applications	
Concentration	0.2 mg/mL	Immunohistochemistry (IHC)	See 3 publications below
Purification	Ammonium sulfate precipitation	in situ PLA (PLA)	See 1 publications below
Storage buffer	PBS, pH 7.4, with 0.2% BSA	* Suggested working dilutions are given as a guide only. It is recommended that the user titrate the product for use in their own experiment using appropriate negative and positive controls.	
Contains	0.09% sodium azide		
Storage Conditions	4° C		

Product specific information

MA5-11900 targets CDw75 in FACS, IF, WB and IHC (P) applications and shows reactivity with Human and Mouse samples. Antibody does not react with rat. The molecular weight of the antigen is 53 & 87 kDa. The MA5-11900 immunogen is nuclei from pokeweed mitogen-stimulated peripheral blood lymphocytes.

Background/Target Information

The protein encoded by this gene is a type II membrane protein that catalyzes the transfer of sialic acid from CMP-sialic acid to galactose-containing substrates. The encoded protein, which is normally found in the Golgi but which can be proteolytically processed to a soluble form, is involved in the generation of the cell-surface carbohydrate determinants and differentiation antigens HB-6, CDw75, and CD76. This protein is a member of glycosyltransferase family 29. Three transcript variants encoding two different isoforms have been found for this gene.

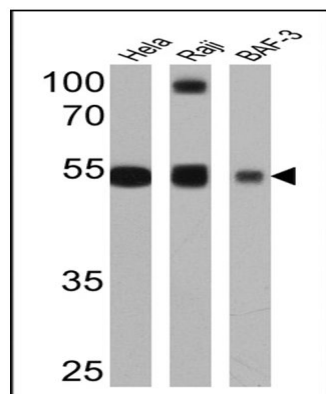
For Research Use Only. Not for use in diagnostic procedures. Not for resale without express authorization.

For Research Use Only. Not for use in diagnostic procedures. Not for resale without express authorization.

Products are warranted to operate or perform substantially in conformance with published Product specifications in effect at the time of sale, as set forth in the Production documentation, specifications and/or accompanying package inserts ("Documentation"). No claim of suitability for use in applications regulated by FDA is made. The warranty provided herein is valid only when used by properly trained individuals. Unless otherwise stated in the Documentation, this warranty is limited to one year from date of shipment when the Product is subjected to normal, proper and intended usage. This warranty does not extend to anyone other than the Buyer. Any model or sample furnished to Buyer is merely illustrative of the general type and quality of goods and does not represent that any Product will conform to such model or sample.

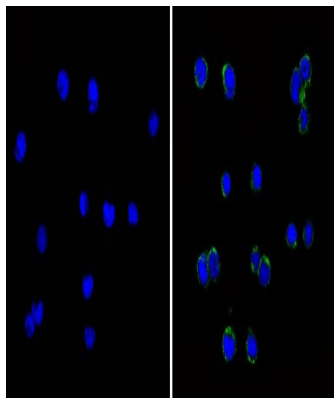
NO OTHER WARRANTIES, EXPRESS OR IMPLIED, ARE GRANTED INCLUDING WITHOUT LIMITATION, IMPLIED WARRANTIES OF MERCHANTABILITY, FITNESS FOR ANY PARTICULAR PURPOSE, OR NON-INFRINGEMENT. BUYER'S EXCLUSIVE REMEDY FOR NON-CONFORMING PRODUCTS DURING THE WARRANTY PERIOD IS LIMITED TO REPAIR, REPLACEMENT OF OR REFUND FOR THE NON-CONFORMING PRODUCT(S) AT SELLER'S SOLE OPTION. THERE IS NO OBLIGATION TO REPAIR, REPLACE OR REFUND FOR PRODUCTS AS THE RESULT OF (i) ACCIDENT, DISASTER OR EVENT OF FORCE MAJEURE, (ii) MISUSE, FAULT OR NEGLIGENCE OF OR BY BUYER, (iii) USE OF THE PRODUCTS IN A MANNER FOR WHICH THEY WERE NOT DESIGNED, OR (iv) IMPROPER STORAGE AND HANDLING OF THE PRODUCTS. Unless otherwise expressly stated on the Product or in the documentation accompanying the Product, the Product is intended for research only and is not to be used for any other purpose, including without limitation, unauthorized commercial uses, in vitro diagnostic uses, ex vivo or in vivo therapeutic uses, or any type of consumption by or application to human or animals.

Product Images For ST6GAL1 Monoclonal Antibody (LN1)



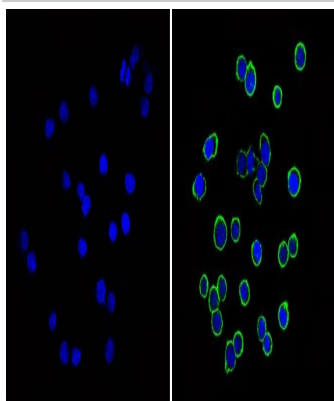
ST6GAL1 Antibody (MA5-11900) in WB

Western blot analysis of CDw75 was performed by loading 25 µg of HeLa (lane 1), Raji (lane 2) and BAF-3 (lane 3) cell lysates onto an SDS polyacrylamide gel. Proteins were transferred to a PVDF membrane and blocked at 4°C overnight. The membrane was probed with a CDw75 monoclonal antibody (Product # MA5-11900) at a dilution of 1:1000 overnight at 4°C, washed in TBST, and probed with an HRP-conjugated secondary antibody for 1 hr at room temperature in the dark. Chemiluminescent detection was performed using Pierce ECL Plus Western Blotting Substrate (Product # 32132). Results show a band at ~53 kDa.



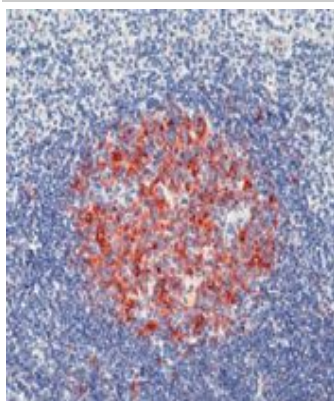
ST6GAL1 Antibody (MA5-11900) in ICC/IF

Immunofluorescent analysis of CDw75 (green) showing staining in the membrane and cytoplasm of BAF-3 cells (right) compared to a negative control without primary antibody (left). Formalin-fixed cells were permeabilized with 0.1% Triton X-100 in TBS for 5-10 minutes and blocked with 3% BSA-PBS for 30 minutes at room temperature. Cells were probed with a CDw75 monoclonal antibody (Product # MA5-11900) in 3% BSA-PBS at a dilution of 1:20 and incubated overnight at 4°C in a humidified chamber. Cells were washed with PBST and incubated with a DyLight-conjugated secondary antibody in PBS at room temperature in the dark. F-actin (red) was stained with a fluorescent red phalloidin and nuclei (blue) were stained with Hoechst or DAPI. Images were taken at a magnification of 60x.



ST6GAL1 Antibody (MA5-11900) in ICC/IF

Immunofluorescent analysis of CDw75 (green) showing staining in the membrane of Ramos cells (right) compared to a negative control without primary antibody (left). Formalin-fixed cells were permeabilized with 0.1% Triton X-100 in TBS for 5-10 minutes and blocked with 3% BSA-PBS for 30 minutes at room temperature. Cells were probed with a CDw75 monoclonal antibody (Product # MA5-11900) in 3% BSA-PBS at a dilution of 1:20 and incubated overnight at 4°C in a humidified chamber. Cells were washed with PBST and incubated with a DyLight-conjugated secondary antibody in PBS at room temperature in the dark. F-actin (red) was stained with a fluorescent red phalloidin and nuclei (blue) were stained with Hoechst or DAPI. Images were taken at a magnification of 60x.



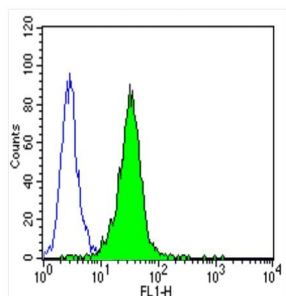
ST6GAL1 Antibody (MA5-11900) in IHC (P)

Formalin-fixed, paraffin-embedded human tonsil stained with CDw75 antibody using peroxidase-conjugate and AEC chromogen. Note cell membrane and cytoplasmic staining of B cells in germinal center.

For Research Use Only. Not for use in diagnostic procedures. Not for resale without express authorization.

Products are warranted to operate or perform substantially in conformance with published Product specifications in effect at the time of sale, as set forth in the Production documentation, specifications and/or accompanying package inserts ("Documentation"). No claim of suitability for use in applications regulated by FDA is made. The warranty provided herein is valid only when used by properly trained individuals. Unless otherwise stated in the Documentation, this warranty is limited to one year from date of shipment when the Product is subjected to normal, proper and intended usage. This warranty does not extend to anyone other than the Buyer. Any model or sample furnished to Buyer is merely illustrative of the general type and quality of goods and does not represent that any Product will conform to such model or sample.

NO OTHER WARRANTIES, EXPRESS OR IMPLIED, ARE GRANTED INCLUDING WITHOUT LIMITATION, IMPLIED WARRANTIES OF MERCHANTABILITY, FITNESS FOR ANY PARTICULAR PURPOSE, OR NON-INFRINGEMENT. BUYER'S EXCLUSIVE REMEDY FOR NON-CONFORMING PRODUCTS DURING THE WARRANTY PERIOD IS LIMITED TO REPAIR, REPLACEMENT OF OR REFUND FOR THE NON-CONFORMING PRODUCT(S) AT SELLER'S SOLE OPTION. THERE IS NO OBLIGATION TO REPAIR, REPLACE OR REFUND FOR PRODUCTS AS THE RESULT OF (i) ACCIDENT, DISASTER OR EVENT OF FORCE MAJEURE, (ii) MISUSE, FAULT OR NEGLIGENCE OF OR BY BUYER, (iii) USE OF THE PRODUCTS IN A MANNER FOR WHICH THEY WERE NOT DESIGNED, OR (iv) IMPROPER STORAGE AND HANDLING OF THE PRODUCTS. Unless otherwise expressly stated on the Product or in the documentation accompanying the Product, the Product is intended for research only and is not to be used for any other purpose, including without limitation, unauthorized commercial uses, in vitro diagnostic uses, ex vivo or in vivo therapeutic uses, or any type of consumption by or application to human or animals.



Cell: BAF-3

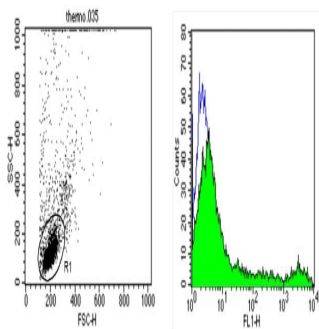
Concentration: 2µg/test (100µl)

ST6GAL1 Antibody (MA5-11900) in Flow

Flow cytometry analysis of CDw75 in BAF-3 cells (green) compared to an isotype control (blue). Cells were harvested, adjusted to a concentration of $1-5 \times 10^6$ cells/mL, fixed with 2% paraformaldehyde and washed with PBS. Cells were blocked with a 2% solution of BSA-PBS for 30 min at room temperature and incubated with a CDw75 monoclonal antibody (Product # MA5-11900) at a dilution of 2 µg/test for 60 min at room temperature. Cells were then incubated for 40 min at room temperature in the dark using a DyLight 488-conjugated secondary antibody and re-suspended in PBS for FACS analysis.

ST6GAL1 Antibody (MA5-11900) in Flow

Flow cytometry analysis of CDw75 in PBMC cells (green) compared to an isotype control (blue). Human blood was collected, combined with a hydrophilic polysaccharide, centrifuged, transferred to a conical tube and washed with PBS. 50 µL of cell solution was added to each tube at a dilution of 2×10^7 cells/mL, followed by the addition of 50 µL of isotype control and primary antibody (Product # MA5-11900) at a dilution of 2 µg/test. Cells were incubated for 30 min at 4°C and washed with a cell buffer, followed by incubation with a DyLight 488-conjugated secondary antibody for 30 min at 4°C in the dark. FACS analysis was performed using 400 µL of cell buffer.



Cell: peripheral blood lymphocytes

Concentration: 2µg/test (100µl)

For Research Use Only. Not for use in diagnostic procedures. Not for resale without express authorization.

Products are warranted to operate or perform substantially in conformance with published Product specifications in effect at the time of sale, as set forth in the Production documentation, specifications and/or accompanying package inserts ("Documentation"). No claim of suitability for use in applications regulated by FDA is made. The warranty provided herein is valid only when used by properly trained individuals. Unless otherwise stated in the Documentation, this warranty is limited to one year from date of shipment when the Product is subjected to normal, proper and intended usage. This warranty does not extend to anyone other than the Buyer. Any model or sample furnished to Buyer is merely illustrative of the general type and quality of goods and does not represent that any Product will conform to such model or sample.

NO OTHER WARRANTIES, EXPRESS OR IMPLIED, ARE GRANTED INCLUDING WITHOUT LIMITATION, IMPLIED WARRANTIES OF MERCHANTABILITY, FITNESS FOR ANY PARTICULAR PURPOSE, OR NON-INFRINGEMENT. BUYER'S EXCLUSIVE REMEDY FOR NON-CONFORMING PRODUCTS DURING THE WARRANTY PERIOD IS LIMITED TO REPAIR, REPLACEMENT OF OR REFUND FOR THE NON-CONFORMING PRODUCT(S) AT SELLER'S SOLE OPTION. THERE IS NO OBLIGATION TO REPAIR, REPLACE OR REFUND FOR PRODUCTS AS THE RESULT OF (i) ACCIDENT, DISASTER OR EVENT OF FORCE MAJEURE, (ii) MISUSE, FAULT OR NEGLIGENCE OF OR BY BUYER, (iii) USE OF THE PRODUCTS IN A MANNER FOR WHICH THEY WERE NOT DESIGNED, OR (iv) IMPROPER STORAGE AND HANDLING OF THE PRODUCTS. Unless otherwise expressly stated on the Product or in the documentation accompanying the Product, the Product is intended for research only and is not to be used for any other purpose, including without limitation, unauthorized commercial uses, in vitro diagnostic uses, ex vivo or in vivo therapeutic uses, or any type of consumption by or application to human or animals.

PubMed References For ST6GAL1 Monoclonal Antibody (LN1)

3 Immunohistochemistry References

Species / Dilution	Summary
Not Applicable / 1:10	MA5-11900 was used in immunohistochemistry to analyze propagation of oestrogen-responsive and oestrogen receptor-positive normal human breast cells in culture
	Nature communications (2015; 6:) "Propagation of oestrogen receptor-positive and oestrogen-responsive normal human breast cells in culture." Author(s):Fridriksdottir AJ,Kim J,Villadsen R,Klitgaard MC,Hopkinson BM,Petersen OW,Rønnov-Jessen L PubMed Article URL: http://dx.doi.org/10.1038/ncomms9786
Human / 1:10	MA5-11900 was used in immunohistochemistry to study the effective shelf-life of diagnostic antibodies
	Histopathology (2013; 63: 869) "Antibodies are forever: a study using 12-26-year-old expired antibodies." Author(s):Argentieri MC,Pilla D,Vanzati A,Lonardi S,Facchetti F,Doglioni C,Parravicini C,Cattoretti G PubMed Article URL: http://dx.doi.org/10.1111/his.12225
Human / 1:25	MA5-11900 was used in immunohistochemistry to study the expression of the CDw75 antigen in human colorectal cancer
	BMC cancer (2009; 9:) "Synthesis and expression of CDw75 antigen in human colorectal cancer." Author(s):Costa-Nogueira C,Villar-Portela S,Cuevas E,Gil-Martín E,Fernández-Briera A PubMed Article URL: http://dx.doi.org/10.1186/1471-2407-9-431

1 in situ PLA References

Species / Dilution	Summary
Human / 1:1,250	MA5-11900 was used in Western Blotting to indicate that haptoglobin and the keratins 8 and 18 are proteins with the CDw75 epitope in the colorectal tissue from CRC patients.
	Oncology letters (2018; 15: 580) "Identification of proteins with the CDw75 epitope in human colorectal cancer." Author(s):Mariño-Crespo Ó,Fernández-Briera A,Gil-Martín E PubMed Article URL: http://dx.doi.org/10.3892/ol.2017.7336

For Research Use Only. Not for use in diagnostic procedures. Not for resale without express authorization.

Products are warranted to operate or perform substantially in conformance with published Product specifications in effect at the time of sale, as set forth in the Production documentation, specifications and/or accompanying package inserts ("Documentation"). No claim of suitability for use in applications regulated by FDA is made. The warranty provided herein is valid only when used by properly trained individuals. Unless otherwise stated in the Documentation, this warranty is limited to one year from date of shipment when the Product is subjected to normal, proper and intended usage. This warranty does not extend to anyone other than the Buyer. Any model or sample furnished to Buyer is merely illustrative of the general type and quality of goods and does not represent that any Product will conform to such model or sample.

NO OTHER WARRANTIES, EXPRESS OR IMPLIED, ARE GRANTED INCLUDING WITHOUT LIMITATION, IMPLIED WARRANTIES OF MERCHANTABILITY, FITNESS FOR ANY PARTICULAR PURPOSE, OR NON-INFRINGEMENT. BUYER'S EXCLUSIVE REMEDY FOR NON-CONFORMING PRODUCTS DURING THE WARRANTY PERIOD IS LIMITED TO REPAIR, REPLACEMENT OF OR REFUND FOR THE NON-CONFORMING PRODUCT(S) AT SELLER'S SOLE OPTION. THERE IS NO OBLIGATION TO REPAIR, REPLACE OR REFUND FOR PRODUCTS AS THE RESULT OF (i) ACCIDENT, DISASTER OR EVENT OF FORCE MAJEURE, (ii) MISUSE, FAULT OR NEGLIGENCE OF OR BY BUYER, (iii) USE OF THE PRODUCTS IN A MANNER FOR WHICH THEY WERE NOT DESIGNED, OR (iv) IMPROPER STORAGE AND HANDLING OF THE PRODUCTS. Unless otherwise expressly stated on the Product or in the documentation accompanying the Product, the Product is intended for research only and is not to be used for any other purpose, including without limitation, unauthorized commercial uses, in vitro diagnostic uses, ex vivo or in vivo therapeutic uses, or any type of consumption by or application to human or animals.