

# Sorcin Polyclonal Antibody

Catalog Number **PA5-28359**

Product data sheet

Details	
Size	100 µL
Host/Isotope	Rabbit / IgG
Class	Polyclonal
Type	Antibody
Immunogen	Recombinant fragment corresponding to a region within amino acids 1 and 198 of Human Sorcin
Conjugate	Unconjugated
Form	Liquid
Concentration	0.65 mg/mL
Purification	Antigen affinity chromatography
Storage buffer	0.1M tris glycine, pH 7, with 10% glycerol
Contains	0.01% thimerosal
Storage Conditions	Store at 4°C short term. For long term storage, store at -20°C, avoiding freeze/thaw cycles.

Species Reactivity	
Species reactivity	Human, Mouse
Published species	Not Applicable
Tested Applications	
Immunoprecipitation (IP)	1:100-1:500
Western Blot (WB)	1:500-1:3,000

\* Suggested working dilutions are given as a guide only. It is recommended that the user titrate the product for use in their own experiment using appropriate negative and positive controls.

## Product specific information

Recommended positive controls: HeLa, 293T, A431, H1299, HeLaS3, Molt-4, Raji, mouse heart. Predicted reactivity: Mouse (97%), Rat (94%), Xenopus laevis (80%), Pig (99%), Chicken (86%), Sheep (99%), Rhesus Monkey (99%), Bovine (99%). Store product as a concentrated solution. Centrifuge briefly prior to opening the vial.

## Background/Target Information

Sorcin is a 198 amino acid, soluble, resistance-related, calcium-binding cytosolic protein belonging to the penta-EF hand (PEF) family of calcium binding proteins and contains 4 EF-hand calcium-binding motifs. Human Sorcin is known to share 95% sequence identity with hamster Sorcin. It is known to associate with the sarcolemmal proteins Annexin VII, cardiac ryanodine receptors and L-type Ca<sup>2+</sup> channels and thus influence the intracellular Ca (2+)-homeostasis. It is also important in the regulation of intracellular Ca<sup>2+</sup> cycling and Ca<sup>2+</sup> influx pathways in the heart and skeletal muscle during excitation-contraction. It is overproduced in many multi-drug resistance (MDR) cells and regulates cell apoptosis pathways, thus acting as a new MDR marker for prognosis of acute myeloid leukemia (AML) and a good target for anti-MDR drug development.

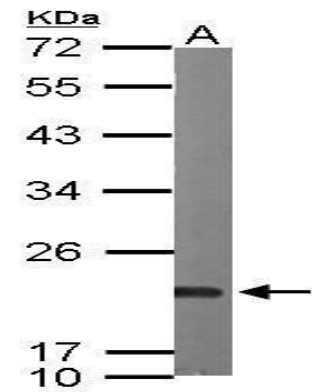
*For Research Use Only. Not for use in diagnostic procedures. Not for resale without express authorization.*

For Research Use Only. Not for use in diagnostic procedures. Not for resale without express authorization.

Products are warranted to operate or perform substantially in conformance with published Product specifications in effect at the time of sale, as set forth in the Production documentation, specifications and/or accompanying package inserts ("Documentation"). No claim of suitability for use in applications regulated by FDA is made. The warranty provided herein is valid only when used by properly trained individuals. Unless otherwise stated in the Documentation, this warranty is limited to one year from date of shipment when the Product is subjected to normal, proper and intended usage. This warranty does not extend to anyone other than the Buyer. Any model or sample furnished to Buyer is merely illustrative of the general type and quality of goods and does not represent that any Product will conform to such model or sample.

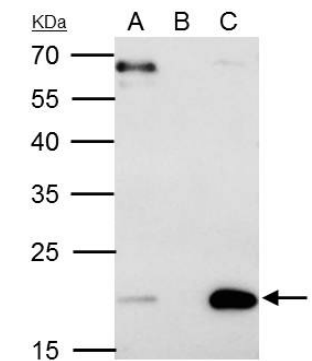
NO OTHER WARRANTIES, EXPRESS OR IMPLIED, ARE GRANTED INCLUDING WITHOUT LIMITATION, IMPLIED WARRANTIES OF MERCHANTABILITY, FITNESS FOR ANY PARTICULAR PURPOSE, OR NON-INFRINGEMENT. BUYER'S EXCLUSIVE REMEDY FOR NON-CONFORMING PRODUCTS DURING THE WARRANTY PERIOD IS LIMITED TO REPAIR, REPLACEMENT OF OR REFUND FOR THE NON-CONFORMING PRODUCT(S) AT SELLER'S SOLE OPTION. THERE IS NO OBLIGATION TO REPAIR, REPLACE OR REFUND FOR PRODUCTS AS THE RESULT OF (i) ACCIDENT, DISASTER OR EVENT OF FORCE MAJEURE, (ii) MISUSE, FAULT OR NEGLIGENCE OF OR BY BUYER, (iii) USE OF THE PRODUCTS IN A MANNER FOR WHICH THEY WERE NOT DESIGNED, OR (iv) IMPROPER STORAGE AND HANDLING OF THE PRODUCTS. Unless otherwise expressly stated on the Product or in the documentation accompanying the Product, the Product is intended for research only and is not to be used for any other purpose, including without limitation, unauthorized commercial uses, in vitro diagnostic uses, ex vivo or in vivo therapeutic uses, or any type of consumption by or application to human or animals.

Product Images For Sorcin Polyclonal Antibody



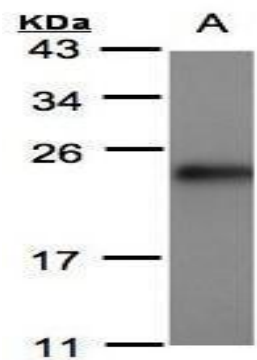
Sorcin Antibody (PA5-28359) in WB

Western Blot using Sorcin Polyclonal Antibody (Product # PA5-28359). Sample (50 µg of whole cell lysate). Lane A: mouse heart. 12% SDS PAGE. Sorcin Polyclonal Antibody (Product # PA5-28359) diluted at 1:1,000.



Sorcin Antibody (PA5-28359) in IP

Sorcin Polyclonal Antibody immunoprecipitates Sorcin protein in IP experiments. IP samples: HeLa whole cell extract. A. 40 µg HeLa whole cell extract. B. Control with 4 µg of preimmune Rabbit IgG. C. Immunoprecipitation of Sorcin protein by 4 µg Sorcin Polyclonal Antibody (Product # PA5-28359). 12 % SDS-PAGE. The immunoprecipitated Sorcin protein was detected by Sorcin Polyclonal Antibody (Product # PA5-28359) diluted at 1:500.



Sorcin Antibody (PA5-28359) in WB

Western Blot using Sorcin Polyclonal Antibody (Product # PA5-28359). Sample (30 µg of whole cell lysate). A: MOLT4SDS PAGE. Z.15% SDS PAGE. Sorcin Polyclonal Antibody (Product # PA5-28359) diluted at 1:500.

For Research Use Only. Not for use in diagnostic procedures. Not for resale without express authorization.

Products are warranted to operate or perform substantially in conformance with published Product specifications in effect at the time of sale, as set forth in the Production documentation, specifications and/or accompanying package inserts ("Documentation"). No claim of suitability for use in applications regulated by FDA is made. The warranty provided herein is valid only when used by properly trained individuals. Unless otherwise stated in the Documentation, this warranty is limited to one year from date of shipment when the Product is subjected to normal, proper and intended usage. This warranty does not extend to anyone other than the Buyer. Any model or sample furnished to Buyer is merely illustrative of the general type and quality of goods and does not represent that any Product will conform to such model or sample.

NO OTHER WARRANTIES, EXPRESS OR IMPLIED, ARE GRANTED INCLUDING WITHOUT LIMITATION, IMPLIED WARRANTIES OF MERCHANTABILITY, FITNESS FOR ANY PARTICULAR PURPOSE, OR NON-INFRINGEMENT. BUYER'S EXCLUSIVE REMEDY FOR NON-CONFORMING PRODUCTS DURING THE WARRANTY PERIOD IS LIMITED TO REPAIR, REPLACEMENT OF OR REFUND FOR THE NON-CONFORMING PRODUCT(S) AT SELLER'S SOLE OPTION. THERE IS NO OBLIGATION TO REPAIR, REPLACE OR REFUND FOR PRODUCTS AS THE RESULT OF (i) ACCIDENT, DISASTER OR EVENT OF FORCE MAJEURE, (ii) MISUSE, FAULT OR NEGLIGENCE OF OR BY BUYER, (iii) USE OF THE PRODUCTS IN A MANNER FOR WHICH THEY WERE NOT DESIGNED, OR (iv) IMPROPER STORAGE AND HANDLING OF THE PRODUCTS. Unless otherwise expressly stated on the Product or in the documentation accompanying the Product, the Product is intended for research only and is not to be used for any other purpose, including without limitation, unauthorized commercial uses, in vitro diagnostic uses, ex vivo or in vivo therapeutic uses, or any type of consumption by or application to human or animals.