

mGluR7 Polyclonal Antibody

Catalog NumberPA5-33829

Product data sheet

Details		Species Reactivity	
Size	50 µg	Species reactivity	Bovine, Human
Host/Isotope	Rabbit / IgG	Tested Applications	Dilution *
Class	Polyclonal		
Type	Antibody		
Immunogen	Synthetic 19 amino acid peptide from N-terminal extracellular domain of human GRM7 / MGLUR7.		
Conjugate	Unconjugated	Immunohistochemistry (Paraffin) (IHC (P))	6-16 µg/mL
Form	Liquid	Western Blot (WB)	Assay-dependent
Concentration	1 mg/mL	Immunocytochemistry (ICC/IF)	Assay-dependent
Purification	Antigen affinity chromatography	* Suggested working dilutions are given as a guide only. It is recommended that the user titrate the product for use in their own experiment using appropriate negative and positive controls.	
Storage buffer	PBS		
Contains	0.1% sodium azide		
Storage Conditions	Store at 4°C short term. For long term storage, store at -20°C, avoiding freeze/thaw cycles.		

Product specific information

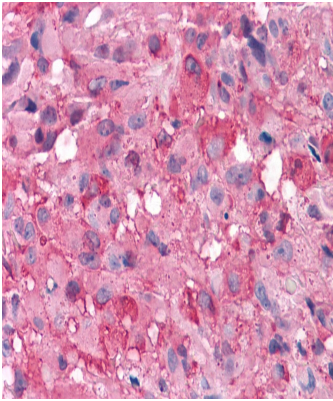
Percent identity with other species by BLAST analysis: Human, Elephant, Bovine (100%).

Background/Target Information

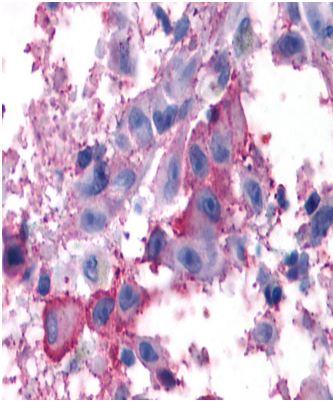
L-glutamate is the major excitatory neurotransmitter in the central nervous system, and it activates both ionotropic and metabotropic glutamate receptors. Glutamatergic neurotransmission is involved in most aspects of normal brain function and can be perturbed in many neuropathologic conditions. The metabotropic glutamate receptors are a family of G protein-coupled receptors that have been divided into three groups on the basis of sequence homology, putative signal transduction mechanisms, and pharmacologic properties. Group I includes GRM1 and GRM5, and these receptors have been shown to activate phospholipase C. Group II includes GRM2 and GRM3, while Group III includes GRM4, GRM6, GRM7 and GRM8. Group II and III receptors are linked to the inhibition of the cyclic AMP cascade but differ in their agonist selectivities. Multiple transcript variants encoding different isoforms have been found for this gene.

For Research Use Only. Not for use in diagnostic procedures. Not for resale without express authorization.

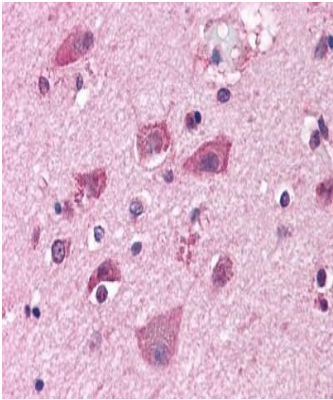
Product Images For mGluR7 Polyclonal Antibody



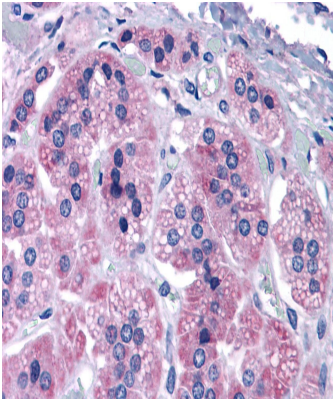
mGluR7 Antibody (PA5-33829) in IHC (P)
Immunohistochemistry analysis of mGluR7 in human Brain, Glioblastoma. Samples were incubated with mGluR7 polyclonal antibody (Product # PA5-33829). Formalin-fixed, paraffin-embedded tissue after heat-induced antigen retrieval.



mGluR7 Antibody (PA5-33829) in IHC (P)
Immunohistochemistry analysis of mGluR7 in human Skin, Melanoma. Samples were incubated with mGluR7 polyclonal antibody (Product # PA5-33829). Formalin-fixed, paraffin-embedded tissue after heat-induced antigen retrieval.



mGluR7 Antibody (PA5-33829) in IHC (P)
Immunohistochemistry analysis of mGluR7 in human brain, neurons and glia. Samples were incubated with mGluR7 polyclonal antibody (Product # PA5-33829). Formalin-fixed, paraffin-embedded tissue after heat-induced antigen retrieval.

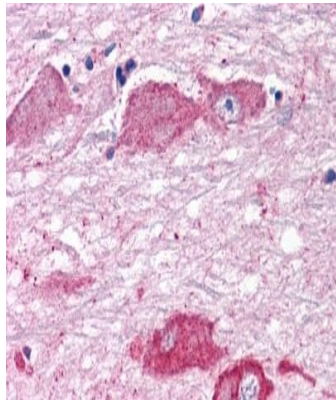


mGluR7 Antibody (PA5-33829) in IHC (P)
Immunohistochemistry analysis of mGluR7 in human adrenal. Samples were incubated with mGluR7 polyclonal antibody (Product # PA5-33829). Formalin-fixed, paraffin-embedded tissue after heat-induced antigen retrieval.

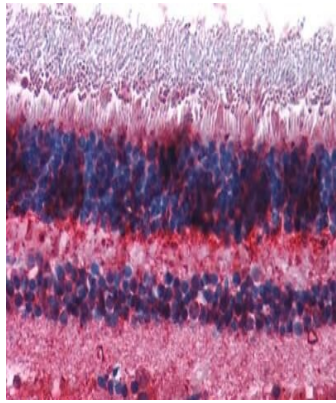
For Research Use Only. Not for use in diagnostic procedures. Not for resale without express authorization.

Products are warranted to operate or perform substantially in conformance with published Product specifications in effect at the time of sale, as set forth in the Production documentation, specifications and/or accompanying package inserts ("Documentation"). No claim of suitability for use in applications regulated by FDA is made. The warranty provided herein is valid only when used by properly trained individuals. Unless otherwise stated in the Documentation, this warranty is limited to one year from date of shipment when the Product is subjected to normal, proper and intended usage. This warranty does not extend to anyone other than the Buyer. Any model or sample furnished to Buyer is merely illustrative of the general type and quality of goods and does not represent that any Product will conform to such model or sample.

NO OTHER WARRANTIES, EXPRESS OR IMPLIED, ARE GRANTED INCLUDING WITHOUT LIMITATION, IMPLIED WARRANTIES OF MERCHANTABILITY, FITNESS FOR ANY PARTICULAR PURPOSE, OR NON-INFRINGEMENT. BUYER'S EXCLUSIVE REMEDY FOR NON-CONFORMING PRODUCTS DURING THE WARRANTY PERIOD IS LIMITED TO REPAIR, REPLACEMENT OF OR REFUND FOR THE NON-CONFORMING PRODUCT(S) AT SELLER'S SOLE OPTION. THERE IS NO OBLIGATION TO REPAIR, REPLACE OR REFUND FOR PRODUCTS AS THE RESULT OF (i) ACCIDENT, DISASTER OR EVENT OF FORCE MAJEURE, (ii) MISUSE, FAULT OR NEGLIGENCE OF OR BY BUYER, (iii) USE OF THE PRODUCTS IN A MANNER FOR WHICH THEY WERE NOT DESIGNED, OR (iv) IMPROPER STORAGE AND HANDLING OF THE PRODUCTS. Unless otherwise expressly stated on the Product or in the documentation accompanying the Product, the Product is intended for research only and is not to be used for any other purpose, including without limitation, unauthorized commercial uses, in vitro diagnostic uses, ex vivo or in vivo therapeutic uses, or any type of consumption by or application to human or animals.



mGluR7 Antibody (PA5-33829) in IHC (P)
Immunohistochemistry analysis of mGluR7 in Brain, Hypothalamus. Samples were incubated with mGluR7 polyclonal antibody (Product # PA5-33829).



mGluR7 Antibody (PA5-33829) in IHC (P)
Immunohistochemistry analysis of mGluR7 in Eye, Retina. Samples were incubated with mGluR7 polyclonal antibody (Product # PA5-33829).

For Research Use Only. Not for use in diagnostic procedures. Not for resale without express authorization.

Products are warranted to operate or perform substantially in conformance with published Product specifications in effect at the time of sale, as set forth in the Production documentation, specifications and/or accompanying package inserts ("Documentation"). No claim of suitability for use in applications regulated by FDA is made. The warranty provided herein is valid only when used by properly trained individuals. Unless otherwise stated in the Documentation, this warranty is limited to one year from date of shipment when the Product is subjected to normal, proper and intended usage. This warranty does not extend to anyone other than the Buyer. Any model or sample furnished to Buyer is merely illustrative of the general type and quality of goods and does not represent that any Product will conform to such model or sample.

NO OTHER WARRANTIES, EXPRESS OR IMPLIED, ARE GRANTED INCLUDING WITHOUT LIMITATION, IMPLIED WARRANTIES OF MERCHANTABILITY, FITNESS FOR ANY PARTICULAR PURPOSE, OR NON-INFRINGEMENT. BUYER'S EXCLUSIVE REMEDY FOR NON-CONFORMING PRODUCTS DURING THE WARRANTY PERIOD IS LIMITED TO REPAIR, REPLACEMENT OF OR REFUND FOR THE NON-CONFORMING PRODUCT(S) AT SELLER'S SOLE OPTION. THERE IS NO OBLIGATION TO REPAIR, REPLACE OR REFUND FOR PRODUCTS AS THE RESULT OF (i) ACCIDENT, DISASTER OR EVENT OF FORCE MAJEURE, (ii) MISUSE, FAULT OR NEGLIGENCE OF OR BY BUYER, (iii) USE OF THE PRODUCTS IN A MANNER FOR WHICH THEY WERE NOT DESIGNED, OR (iv) IMPROPER STORAGE AND HANDLING OF THE PRODUCTS. Unless otherwise expressly stated on the Product or in the documentation accompanying the Product, the Product is intended for research only and is not to be used for any other purpose, including without limitation, unauthorized commercial uses, in vitro diagnostic uses, ex vivo or in vivo therapeutic uses, or any type of consumption by or application to human or animals.